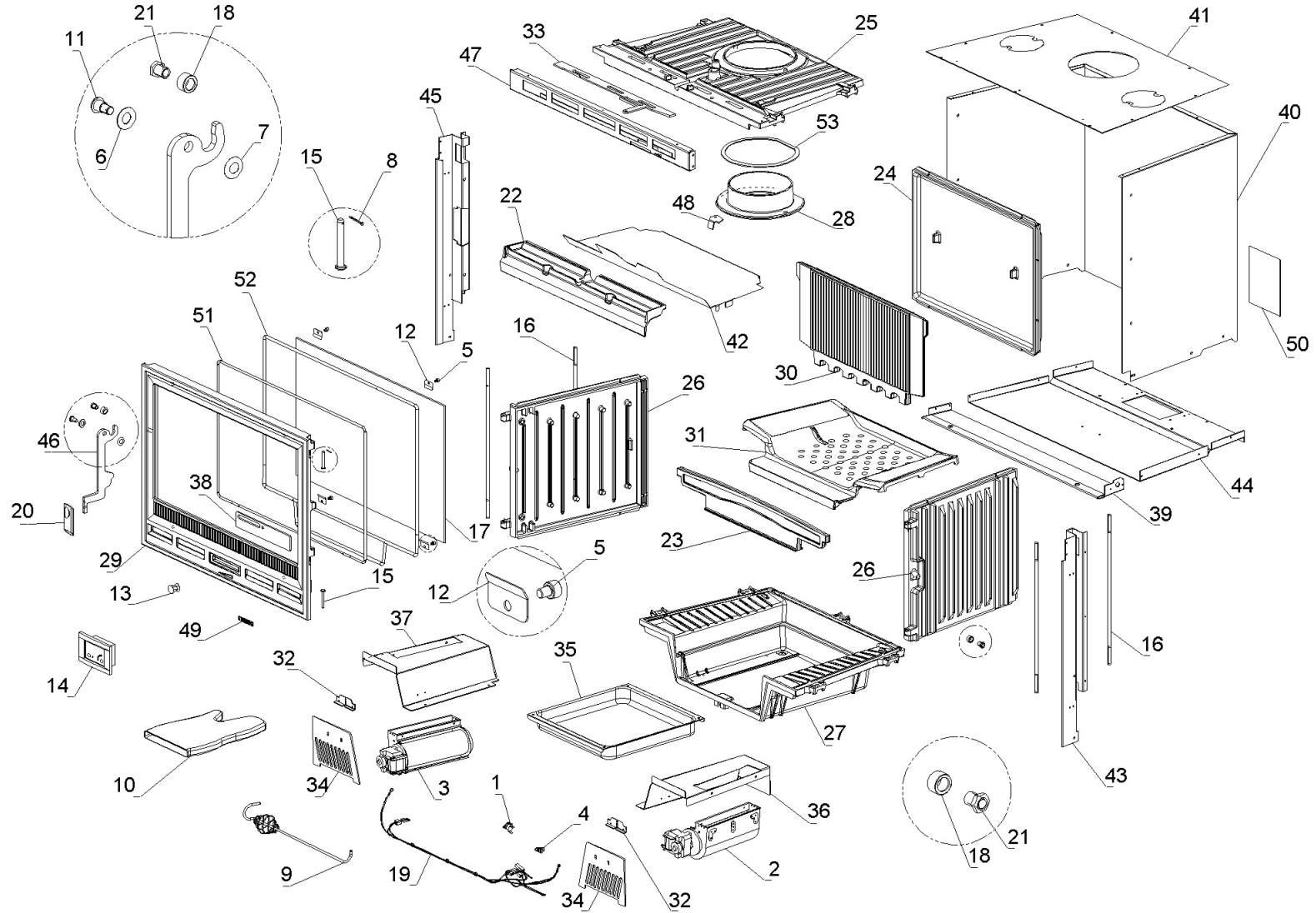


\*\*\*ATTENTION: THE PRESENT DOCUMENT COULD BE DAILY REVISED WITHOUT NOTICE\*\*\*






6016743-003\_[2011]

\*\*\*ATTENTION: THE PRESENT DOCUMENT COULD BE DAILY REVISED WITHOUT NOTICE\*\*\*

🗨	↑↓	Code	↑↓	Description	Design quantity
1		0020013		THERMOSTAT	1
2		0020028		BYPASS FAN	1
3		0020029		BYPASS FAN	1
4		0020715		CABLEWAY	1
5		0060215		STAINLESS STEEL M5X6 mm SCREW	4
6		0060802		SPRING WASHER 10 mm	2
7		0060803		CUP SPRING 20-12 mm	1
8		0063104		SPLIT PIN 1.5X15 mm	2
9		1024019		POKER	1
10		1121298		GLOVE	1
11		1131008		BLACK GALVANISED M8 PIN	1
12		1152039		STAINLESS STEEL PLATE	4
13		6021608		CHROMED KNOB	1
14		6021609		ADJUSTER	1
15		6021612		PIN	2
16		6021700		UNREFINED TIE ROD	4
17		6021705		GLASS CERAMIC 4X362.5X574.5 mm	1
18		6021710		BUSHING 16X10X9.5 mm	2
19		6021711		ELECTRICAL WIRING ASSEMBLY	1
20		6021715		BAKELITE GRIP	1
21		6021792		THREADED PIN	2
22		6031701		SECONDARY AIR BOX	1
23		6031706		LOG GUARD	1
24		6031707		CAST IRON BACK	1
25		6031708		COVER	1


6016743-003\_[2011]

\*\*\*ATTENTION: THE PRESENT DOCUMENT COULD BE DAILY REVISED WITHOUT NOTICE\*\*\*

		Code		Description	Design quantity
27		6031710		CAST IRON BASE	1
28		6031711		UNREFINED SMOKE RING	1
29		6036780		BLACK FIRE DOOR	1
30		6036731		CAST IRON BACK WALL	1
31		6036770		CAST IRON GRATE	1
32		6051619		GALVANISED PLATE	2
33		6051751		BLACK AIR CONTROL	1
34		6051752		BLACK GRATE	2
35		6051753		BLACK ASH DRAWER	1
36		6051704		GALVANISED SUPPORT	1
37		6051705		GALVANISED SUPPORT	1
38		6051757		BLACK AIR CONTROL	1
39		6051760		BLACK BASE PROFILE	1
40		6051711		GALVANISED COVER	1
41		6051712		GALVANISED UPPER COVER	1
42		6051714		LOWER DEFLECTOR	1
43		6051791		BLACK SHEET METAL	1
44		6051734		GALVANISED BASE	1
45		6051799		BLACK SHEET METAL	1
46		6051754		BLACK HANDLE	1
47		6056770		BLACK FRONT PANEL	1
48		6056721		GALVANISED SHEET METAL	1
49		6090700		ADHESIVE LABEL	1
50		6090701		TECHNICAL DATA LABEL	1
51		0005005		SEAL 5 mm	1,85

6016743-003\_[2011]

\*\*\*ATTENTION: THE PRESENT DOCUMENT COULD BE DAILY REVISED WITHOUT NOTICE\*\*\*

	 <b>Code</b>	 <b>Description</b>	<b>Design quantity</b>
53	0005003	SEAL 10X2 mm	0,65